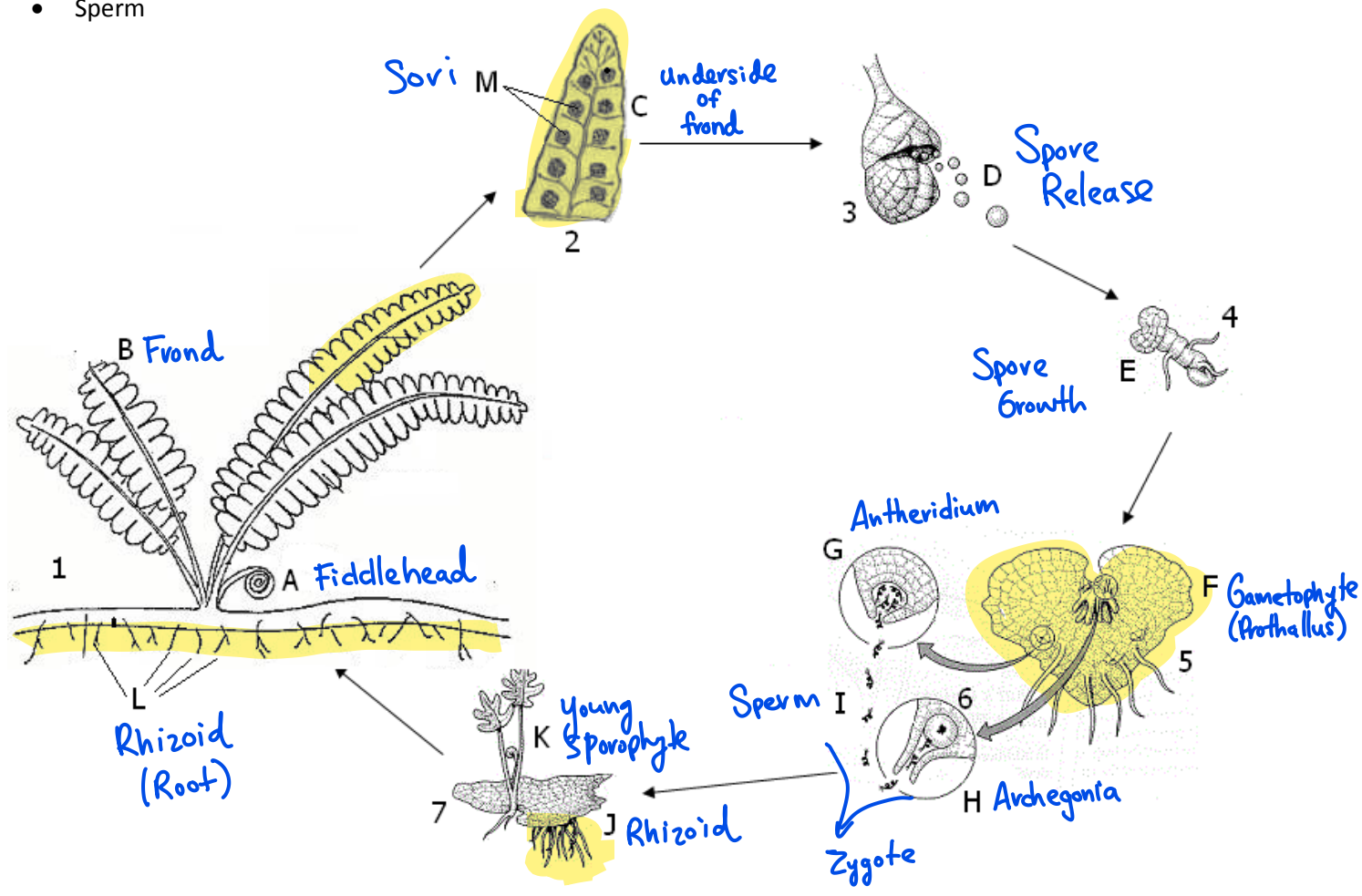


Fern Life Cycle

Directions:

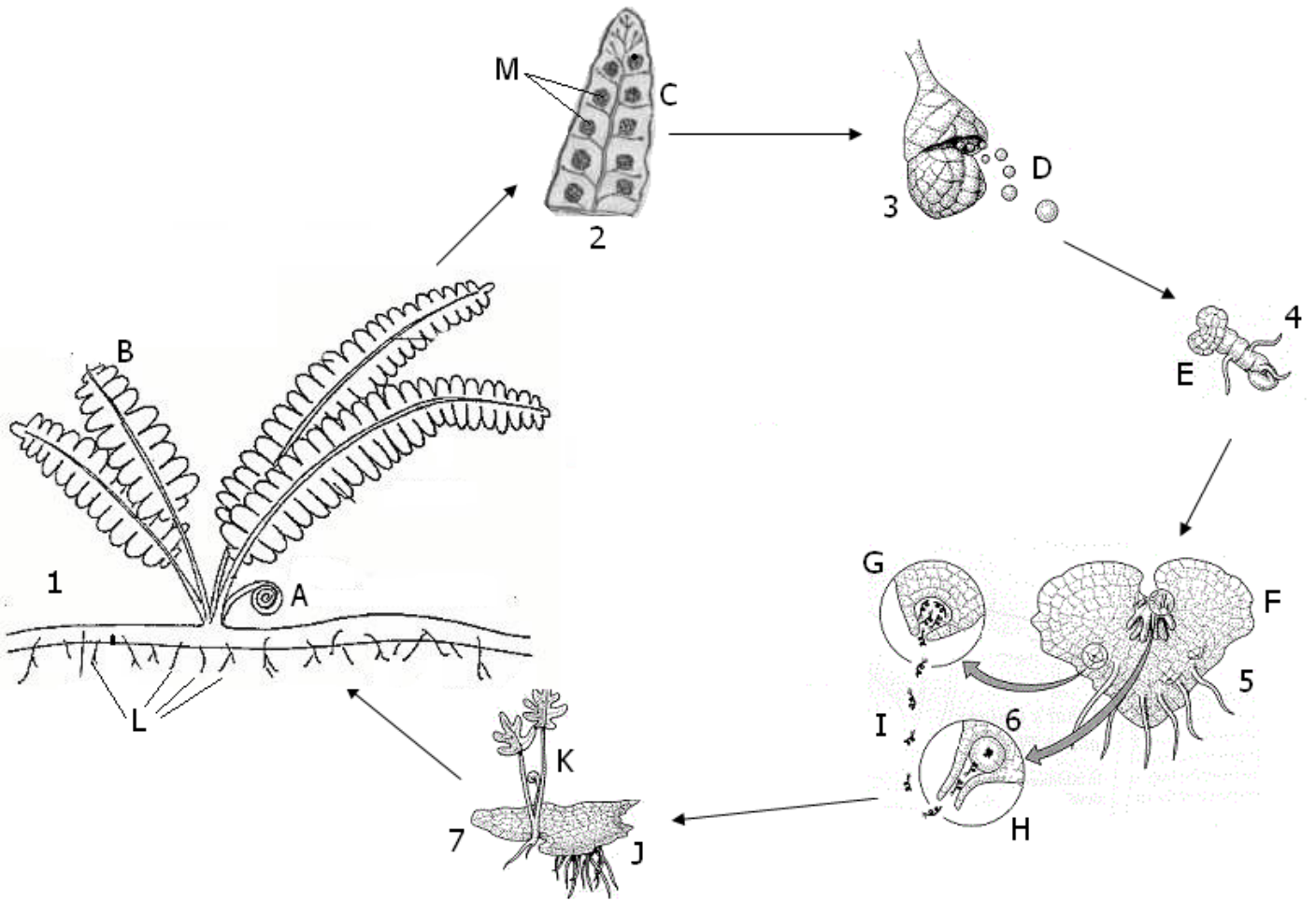
- 1) Color the diploid stages green and the haploid stages red.
- 2) Identify parts A-M in the drawing below by using the given choices. Ignore the numbers for now.
 - Rhizoids **x 2**
 - Young sporophyte
 - Sori
 - Gametophyte (prothallus)
 - Fiddlehead
 - ~~Gametophyte (prothallus)~~
 - Underside of frond
 - Frond
 - Archegonium (holds female egg)
 - Antheridium (holds male sperm)
 - Spores released
 - Spore growth
 - Sperm



In which picture are the following events taking place?

Spores are being released from the sporophyte.	1	2	3	4	5	6	7
Sporophyte is growing from the gametophyte.....	1	2	3	4	5	6	7
Fertilization is taking place.....	1	2	3	4	5	6	7
The start of the haploid stage.....	1	2	3	4	5	6	7
The start of the diploid stage.....	1	2	3	4	5	6	7
The zygote is about to be formed.....	1	2	3	4	5	6	7
Sperm are swimming to the egg.....	1	2	3	4	5	6	7
Rain is needed for reproduction to occur	1	2	3	4	5	6	7
Adult sporophyte	1	2	3	4	5	6	7
Adult gametophyte	1	2	3	4	5	6	7

Corrections (if needed)



In which picture are the following events taking place?

Spores are being released from the sporophyte.	1	2	3	4	5	6	7
Sporophyte is growing from the gametophyte.....	1	2	3	4	5	6	7
Fertilization is taking place.....	1	2	3	4	5	6	7
The start of the haploid stage.....	1	2	3	4	5	6	7
The start of the diploid stage.....	1	2	3	4	5	6	7
The zygote is about to be formed.....	1	2	3	4	5	6	7
Sperm are swimming to the egg.....	1	2	3	4	5	6	7
Rain is needed for reproduction to occur	1	2	3	4	5	6	7
Adult sporophyte	1	2	3	4	5	6	7