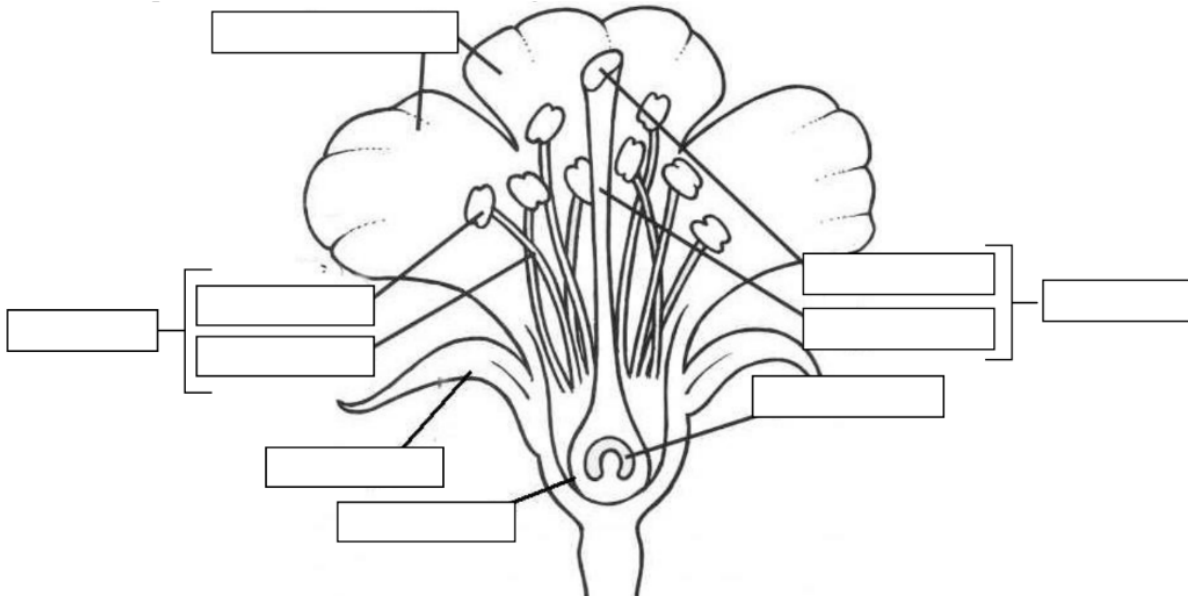


Parts & Functions of a Flower

Name: _____ Block: _____ Date: _____

Label the parts of the flower:



Define and describe the function of the following terms:

Term	Definition
<i>Reproductive Structures:</i>	
Stamen	
Anther	
Filament	
Carpel (Pistil)	
Stigma	

Style	
Ovary/Ovule	
Non-Reproductive Structures:	
Sepal	
Petal	
Receptacle	
Pedicel	

Practice Questions: (skip imperfect, perfect)

2. Identify each part of the flower described below using the words in the word list.

- _____ - The female part of a flower
- _____ - A small plant that is just starting to grow
- _____ - The place where pollen develops and is stored
- _____ - The female sex cell in a plant
- _____ - Occurs when the sperm and egg cells unite
- _____ - A sugary substance that attracts insects
- _____ - The male sex cell in a plant
- _____ - The male part of a flower
- _____ - The stalk that supports the anther
- _____ - The part of the pistil that receives the pollen
- _____ - Part that connects the stigma and ovary
- _____ - Protective leaf-like enclosure for the flower bud
- _____ - The ripened ovary of a plant that contains seeds
- _____ - Flower that contains both male and female parts
- _____ - Flower that lacks either male or female parts
- _____ - The structures that make up the outside of the flower and may be colored or contain nectar or perfume glands

<p>Word List: Anther Fertilization Filament Fruit Imperfect Nectar Ovary Perfect Petals Pistil Pollen Seedling Sepals Stamen Stigma Style</p>
--